

**WARDS
SEA KING**

**OUTBOARD
MOTOR**

PARTS CATALOG

MW-45

35

O.B.C. CERTIFIED BRAKE H.P. AT 4,750 R.P.M.

MODEL

VWB-27035A

VWB-27036A

(SERIAL NUMBERS 17X 20,001 AND OVER)

Printed in U.S.A.

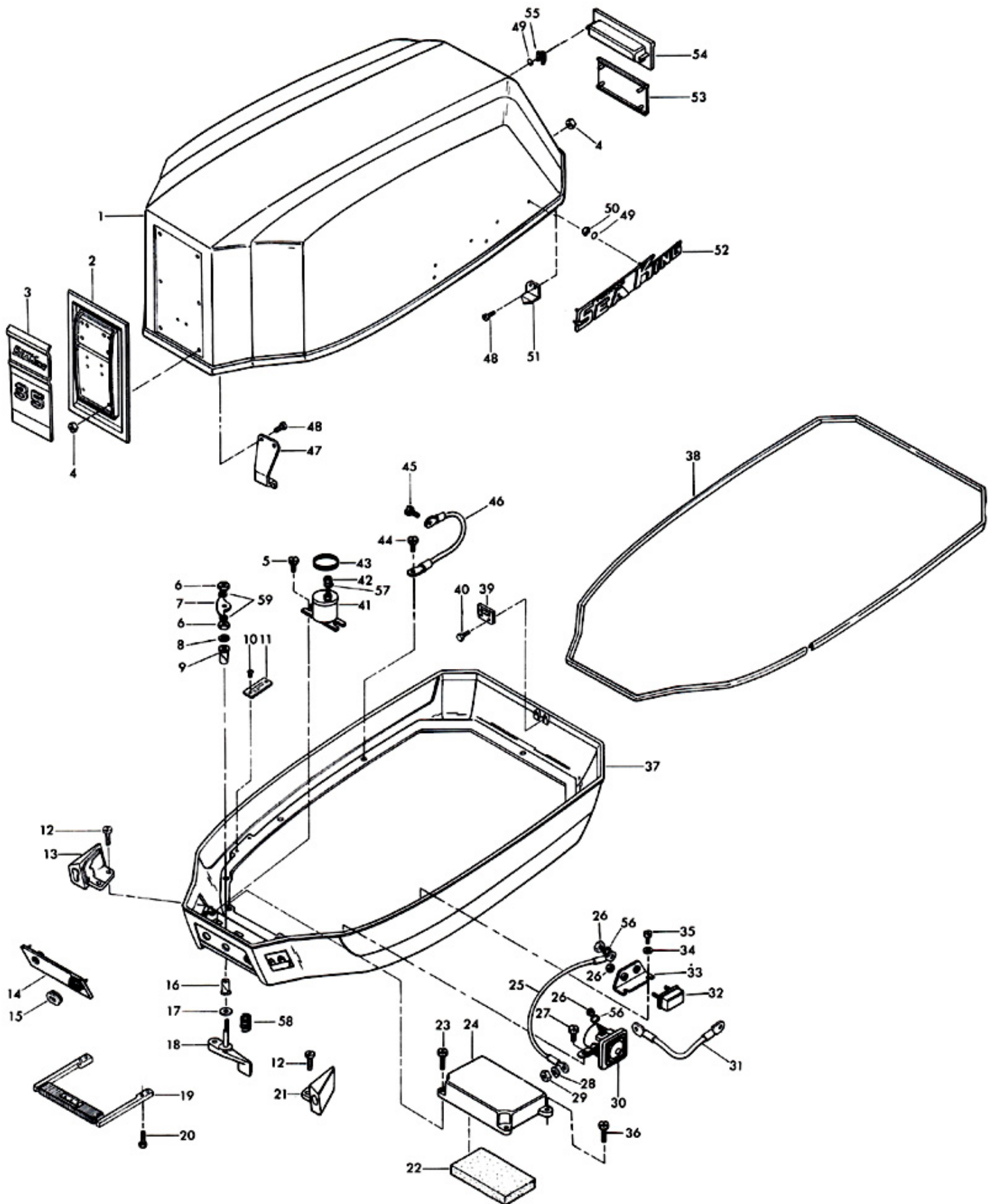
1/71

SEA KING—SOLD EXCLUSIVELY BY ***MONTGOMERY WARD***

Engine Cover and Support Plate

| ILLUS. NO. | PART NO. | QTY. | DESCRIPTION | ILLUS. NO. | PART NO. | QTY. | DESCRIPTION |
|------------|-----------|------|--|------------|----------|------|---|
| 1 | S312712 | 1 | Engine cover w/tilt handle, fasteners, and retainers | 30 | 177917 | 1 | Starter relay |
| 2 | 402512 | 1 | Plate, front | 31 | 307908 | 1 | Wire, starter |
| 3 | 402711 | 1 | Plate, insert "35" | 32 | 91460-2 | 1 | Circuit breaker |
| 4 | 7011 | 4 | Elastic stop nut, 10 - 24 | 33 | 91446-1 | 1 | Circuit breaker bracket |
| 5 | 1481 | 2 | Hex hd screw, 1/4 - 20 x 9/16 | 34 | 8012 | 2 | Plain washer |
| 6 | 1518 | 2 | Hex nut, S.S., 5/16 - 18 | 35 | 1089 | 2 | Fill hd screw, 10 - 24 x 8/16 |
| 7 | 89777-1 | 1 | Latch cam | 36 | 1201 | 2 | Hex hd mach. screw, 1/4 - 20 x 3/4 |
| 8 | 73741 | 1 | Retaining ring | 37 | 312038 | 1 | Support plate |
| 9 | 307818 | 1 | Bearing, latch shaft | 38 | 309756 | 1 | Support plate packing |
| 10 | 1293 | 2 | Drive screw, 2 x 3/16 | 39 | 312774 | 1 | Bracket, rear retainer |
| 11 | A197395-2 | 1 | Plate, identification | 40 | 1481 | 2 | Hex screw, 1/4 - 20 x 9/16 |
| 12 | 1733 | 4 | Pan hd screw, 10 - 24 x 9/16 | 41 | A289924 | 1 | Choke solenoid |
| 13 | 402189 | 1 | Bushing, cable entry | 42 | 1647 | 1 | Hex nut, 8 - 32 |
| 14 | 312888 | 1 | Panel, support plate | 43 | 391983 | 1 | Retaining band |
| 15 | 289899 | 1 | Grommet, battery cable entry | 44 | 1578 | 1 | Hex hd mach. screw and spring lock-washer assy., 1/4 - 20 x 7/8 |
| 16 | 307818 | 1 | Bearing, latch shaft | 45 | 1578 | 1 | Hex hd mach. screw and spring lock-washer assy., 1/4 - 20 x 7/8 |
| 17 | 8035 | 1 | Plain washer | 46 | 381908-1 | 1 | Ground strap |
| 18 | A312763 | 1 | Cover latch handle w/shaft | 47 | A312778 | 1 | Engine cover retainer, forward w/screw and nuts |
| 19 | 312647 | 1 | Carrying handle | 48 | 1475 | 4 | Fill hd screw, S.S., 10 - 24 x 1/2 |
| 20 | 1199 | 4 | Hex hd mach. screw, 1/4 - 20 x 1 | 49 | 85735 | 31 | Seal |
| 21 | 402477 | 1 | Bushing, elec. cable entry | 50 | 1753 | 31 | Fastener |
| 22 | 307860 | 1 | Intake silencer | 51 | A312480 | 1 | Engine cover retainer w/screws and nuts |
| 23 | 1198 | 2 | Hex hd mach. screw, 1/4 - 20 x 1 | 52 | 401366 | 2 | Plate "SEA KING" |
| 24 | A307779 | 1 | Baffle, air intake | 53 | 402180 | 1 | Trim, rear "35" |
| 25 | 307683 | 1 | Wire, circuit breaker | 54 | 401269 | 1 | Tilt handle |
| 26 | 1513 | 5 | Hex nut, 10 - 32 | 55 | 9037 | 2 | Fastener |
| 27 | 1238 | 7 | Hex hd mach. screw, 1/4 - 20 x 3/4 | 56 | 8091 | 3 | Spring L/W |
| 28 | 8064 | 2 | Lockwasher | 57 | 8056 | 1 | Spring L/W |
| 29 | 1615 | 2 | Hex nut, S.S., 5/16 - 24 | 58 | 309300 | 1 | Spring |
| | | | | 59 | 8064 | 2 | Spring L/W |
| | | | | | 402385 | 1 | Decal "Electric" (not shown) |

ENGINE COVER AND SUPPORT PLATE



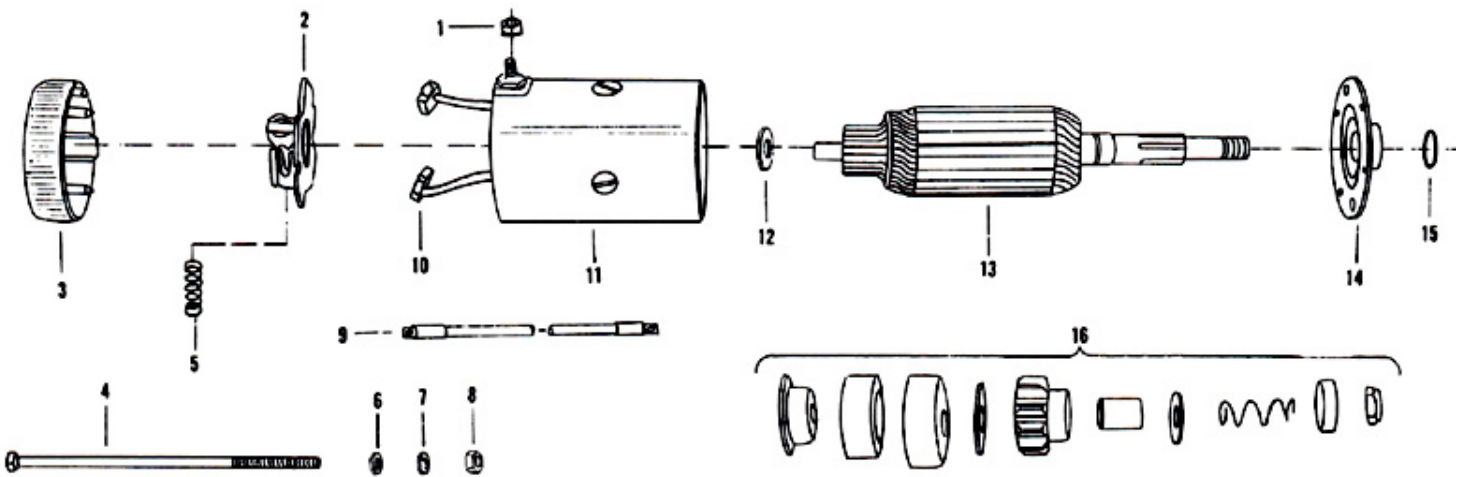
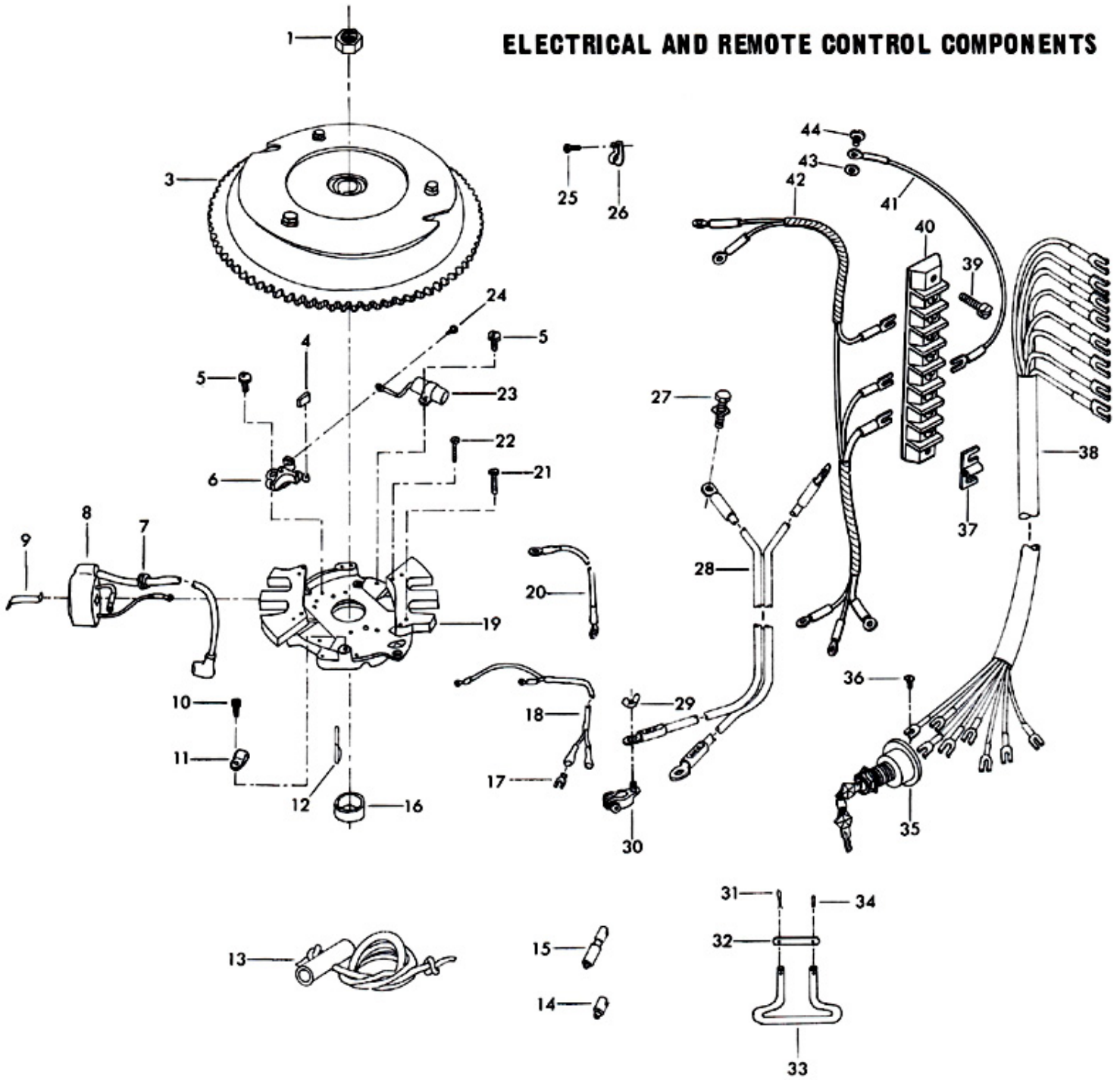
Electrical and Remote Control Components

| ILLUS. NO. | PART NO. | QTY. | DESCRIPTION | ILLUS. NO. | PART NO. | QTY. | DESCRIPTION |
|------------|----------|------|--|------------|-----------|------|---|
| 1 | 1920 | 1 | Hex nut, 5/8 - 18 | 26 | 178446 | 1 | Clamp |
| 3 | 93097-4 | 1 | Flywheel and starter gear | 27 | 1426 | 1 | Hex slot hd screw w/lockwasher, 1/4 - 20 x 7/16 |
| 4 | 12227 | 2 | Cam wiper felt | 28 | 381896-4 | 1 | Battery cable |
| 5 | 12014 | 6 | Breaker point and condenser mounting screw, 8 - 32 x 3/8 | 29 | 381797 | 2 | Wing nut |
| 6 | 12044 | 2 | Breaker point set | 30 | 381898 | 2 | Battery terminal |
| 7 | 12050 | 2 | Grommet | 31 | 1020 | 1 | Cotter pin |
| 8 | 12057 | 2 | Coil w/lead wire, sparkie and grommet | 32 | 111694-1 | 1 | Steering bracket latch |
| 9 | 12053 | 2 | Coil retaining clip | 33 | A111698-1 | 1 | Remote steering bracket w/latch and pins |
| 10 | 12016 | 1 | Cable clip screw, 8 - 32 x 1/2 | 34 | 1794 | 1 | Spring pin |
| 11 | 12246 | 1 | Cable clip | 35 | A296918-1 | 1 | Ignition switch w/keys and mounting nuts |
| 12 | 92498 | 1 | Key | 36 | 1280 | 5 | Pan hd screw, 8 - 32 x 1/4 |
| 13 | A27232 | 1 | Starter rope w/handle | 37 | 307317 | 1 | Clip terminal block ground |
| 14 | 58685-2 | 1 | Connector, shift cable | 38 | 85843 | 1 | Electric control cable |
| 15 | A58976-1 | 1 | Connector, throttle cable | 39 | 1797 | 2 | Pan hd screw, 10 - 24 x 5/8 |
| 16 | 93002 | 1 | Cam | 40 | 289497-1 | 1 | Terminal block |
| 17 | 296898 | 2 | Male slide terminal | 41 | 307104 | 1 | Thermoswitch wire |
| 18 | 12059 | 1 | Primary terminal wire | 42 | 307744 | 1 | Wiring harness |
| 19 | 338095 | 1 | Stator plate | 43 | 8056 | 1 | Lockwasher |
| 20 | 310664 | 1 | Wire, stator ground | 44 | 1280 | 1 | Pan hd screw, 8 - 32 x 1/4 |
| 21 | 12023 | 2 | Lamination screw, 10 - 24 x 1 | | | | Magneto complete, order component parts |
| 22 | 12017 | 2 | Lamination screw, 8 - 32 x 7/8 | | | | Sparkie kit (not shown) |
| 23 | 12042 | 2 | Condenser w/mount | | | | Decal, wiring (not shown) |
| 24 | 1300 | 2 | Breaker arm terminal screw, 6 - 32 x 3/8 | | K750-1 | 2 | |
| 25 | 1083 | 1 | Fill hd screw, 10 - 24 x 3/8 | | 290398 | 1 | |

Starter

| ILLUS. NO. | PART NO. | QTY. | DESCRIPTION | ILLUS. NO. | PART NO. | QTY. | DESCRIPTION |
|------------|----------|------|-------------------------------|------------|----------|------|--------------------------|
| 1 | 15072 | 1 | Hex lock nut, 1/4 - 20 | 10 | 15042 | 1 | Brush set |
| 2 | 15038 | 1 | Brush plate and holder | 11 | 15043 | 1 | Frame and field assembly |
| 3 | 15037 | 1 | Head assembly, commutator end | 12 | 15073 | 1 | Thrust washer package |
| 4 | 15036 | 2 | Thru bolt package | 13 | 15044 | 1 | Armature |
| 5 | 15034 | 1 | Spring set | 14 | 15021 | 1 | Head assembly, drive end |
| 6 | 8028 | 2 | Plain washer | 15 | 15000 | 1 | "O" ring seal |
| 7 | 15060 | 2 | Lockwasher | 16 | 15013 | 1 | Bendix drive |
| 8 | 1514 | 2 | Hex nut, 1/4 - 20 | | A201955 | 1 | Starter motor complete |
| 9 | 381908-1 | 1 | Starter lead and ground strap | | | | |

ELECTRICAL AND REMOTE CONTROL COMPONENTS



STARTER

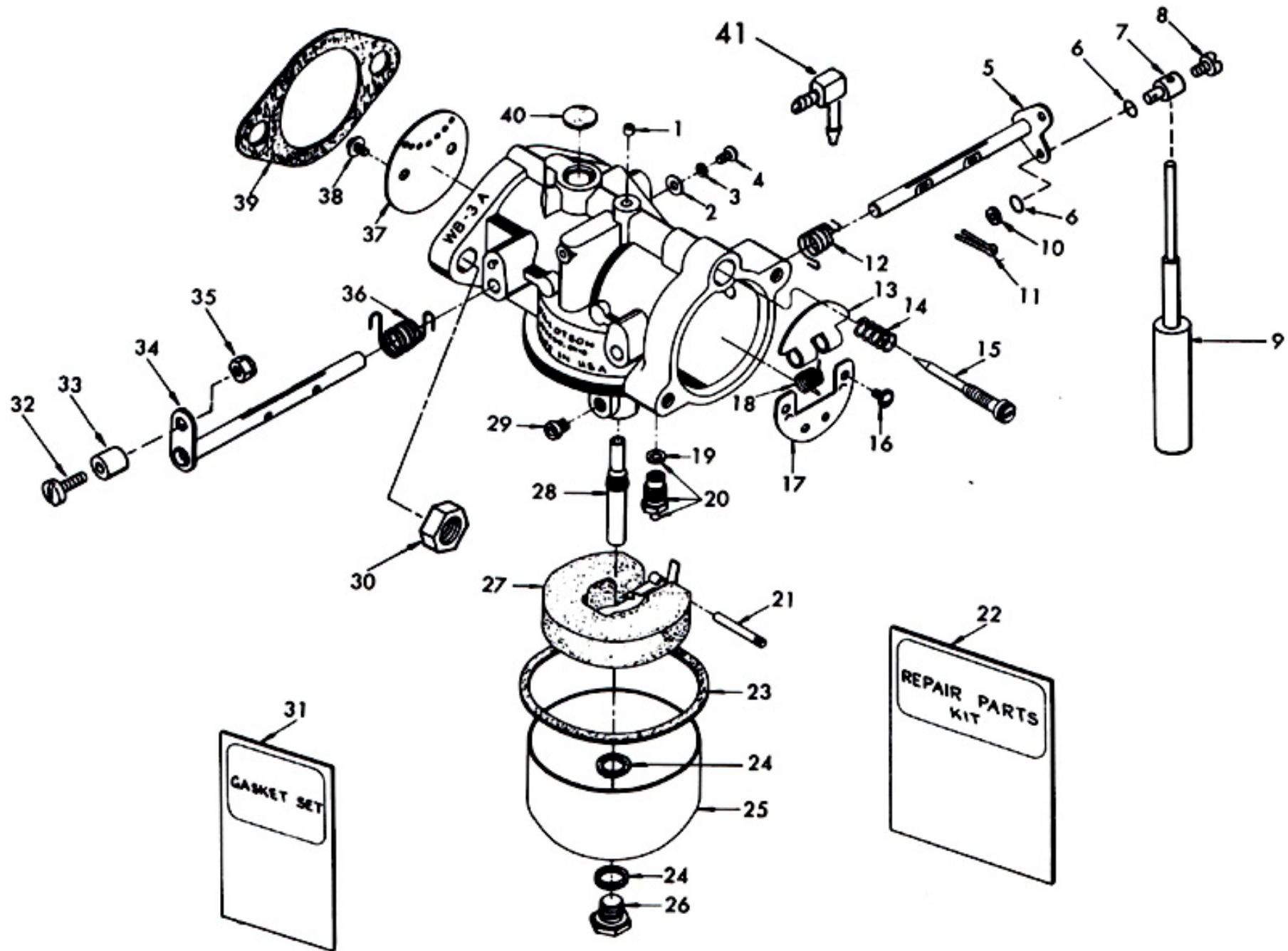
Carburetor

| ILLUS. NO. | PART NO. | QTY. | DESCRIPTION |
|------------|----------|------|--|
| 1 | * 010588 | 1 | Body channel cup plug |
| 2 | 03804 | 1 | Throttle shaft position retaining screw washer |
| 3 | 06396 | 1 | Throttle shaft position retaining screw lockwasher |
| 4 | 06393 | 1 | Throttle shaft position retaining screw |
| 5 | 014298 | 1 | Choke shaft and lever |
| 6 | 184579 | 2 | Seal, choke arm swivel |
| 7 | 184033-1 | 1 | Swivel choke rod |
| 8 | 1059 | 1 | Fill hd screw, 6 - 32 x 1/4 |
| 9 | A296926 | 1 | Choke solenoid plunger |
| 10 | 8088 | 1 | Plain washer |
| 11 | 1014 | 1 | Cotter pin |
| 12 | * 015729 | 1 | Choke shaft return spring |
| 13 | 012251 | 1 | Choke relief valve |
| 14 | * 011103 | 1 | Idle mixture screw spring |
| 15 | * 014166 | 1 | Idle mixture screw |
| 16 | 08942 | 2 | Choke shutter retaining screw and lockwasher |
| 17 | 012250 | 1 | Choke shutter |
| 18 | 010883 | 1 | Choke relief valve spring |
| 19 | 010165 | 1 | Inlet seat gasket |
| 20 | * 010790 | 1 | Inlet needle, seat and gasket |
| 21 | * 013944 | 1 | Float lever pin |
| 22 | RK-978 | 1 | Repair parts kit, includes all items marked with an asterisk (*) |
| 23 | 015623 | 1 | Fuel bowl gasket |
| 24 | 02510 | 2 | Fuel bowl retaining screw gasket |
| 25 | 013552 | 1 | Fuel bowl |
| 26 | 013945 | 1 | Fuel bowl retaining screw |
| 27 | 013554 | 1 | Float |
| 28 | * 015213 | 1 | Main nozzle |
| 29 | * 014303 | 1 | Main fuel jet (.074) (Standard) |
| 30 | 1516 | 2 | Hex nut, 5/16 - 18 |
| 31 | * GS-188 | 1 | Gasket set |
| 32 | 333316 | 1 | Throttle roller shaft |
| 33 | 92759 | 1 | Roller |
| 34 | 015728 | 1 | Throttle shaft and lever |
| 35 | 1770 | 1 | Stop nut, 8 - 32 |
| 36 | * 014292 | 1 | Throttle shaft return spring |
| 37 | 014275 | 1 | Throttle shutter |
| 38 | * 08942 | 2 | Throttle shutter retaining screw and lockwasher |
| 39 | 40906-1 | 1 | Flange gasket |
| 40 | * 04326 | 1 | Body channel welch plug |
| 41 | 307314 | 1 | Carburetor elbow |
| | 353061-1 | 1 | Carburetor complete, (WB12B) (not shown) |

OPTIONAL SIZE MAIN FUEL JET

| | <u>Std.</u> | <u>1250-3750</u> | <u>3750-6250</u> | <u>6250-8250</u> |
|----------|-------------|------------------|------------------|------------------|
| Size | .074 | .072 | .070 | .068 |
| Part No. | 014303 | 015026 | 013430 | 013967 |

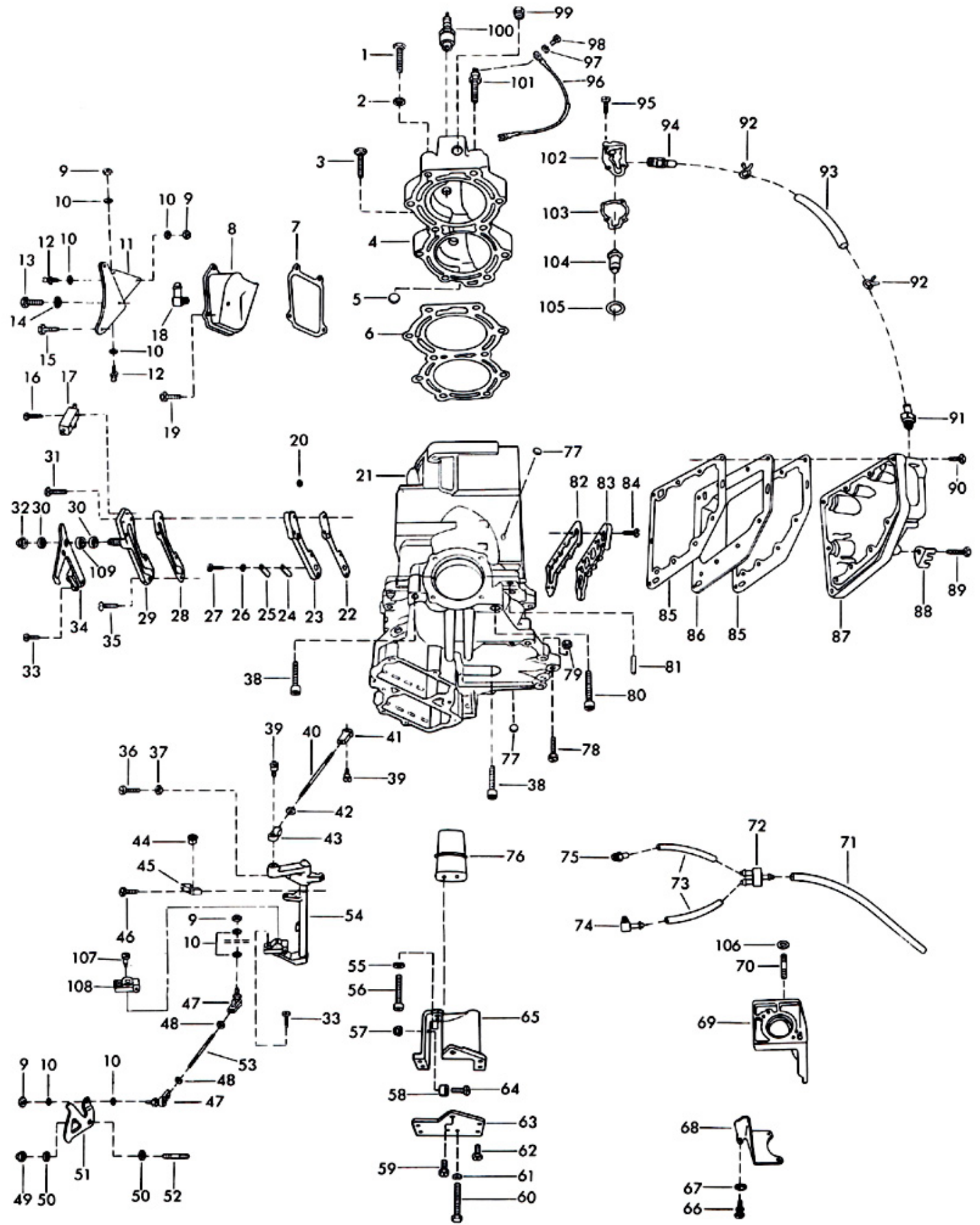
CARBURETOR



Power Head

| ILLUS. NO. | PART NO. | QTY. | DESCRIPTION | ILLUS. NO. | PART NO. | QTY. | DESCRIPTION |
|------------|-------------|------|--|------------|-----------|------|---|
| 1 | 1544 | 8 | Hex hd cap screw, 3/8 - 16 x 2 1/4 | 61 | 8063 | 2 | Lockwasher |
| 2 | 8039 | 9 | Plain washer | 62 | 1502 | 4 | Hex hd screw, 1/4 - 20 x 5/8 |
| 3 | 1184 | 1 | Hex hd cap screw, 3/8 - 16 x 2 1/2 | 63 | 307946 | 1 | Shock mount upper, cover |
| 4 | 2A307518 | 1 | Cylinder head w/welch plug | 64 | 1553 | 2 | Fill hd screw, 8 - 32 x 3/4 |
| 5 | 1526 | 1 | Welch plug | 65 | 307956 | 1 | Shock mount upper, engine bracket |
| 6 | 201529-1 | 1 | Cylinder head gasket | 66 | 1580 | 2 | Hex slot hd screw w/lockwasher, 1/4 - 20 x 1 1/8 |
| 7 | 40223 | 2 | Transfer port cover gasket | 67 | 8025 | 2 | Plain washer |
| 8 | A411222 | 2 | Transfer port cover | 68 | 89675-1 | 1 | Starter mounting bracket, lower |
| 9 | 1340 | 4 | Hex nut, 10 - 32 | 69 | 312427 | 1 | Starter mounting bracket |
| 10 | 8058 | 8 | Int. tooth lockwasher | 70 | 307211 | 3 | Stud |
| 11 | 267371 | 1 | Connector stud bracket | 71 | 338254 | 1 | Crankcase drain line (long) |
| 12 | 98273 | 2 | Rod end connector stud | 72 | A287922 | 1 | Check valve "Y" fitting w/drain lines |
| 13 | 1578 | 2 | Hex slot hd screw, 1/4 - 20 x 7/8 | 73 | A287922 | 1 | Crankcase drain lines (short) w/"Y" fitting and check valves |
| 14 | 8028 | 1 | Plain washer | 74 | 366314 | 1 | Elbow |
| 15 | 1238 | 1 | Hex slot hd screw, 1/4 - 20 x 3/4 | 75 | 366801 | 1 | Drain fitting |
| 16 | 1654 | 2 | Fill hd screw, 6 - 32 x 7/8 | 76 | 203965 | 1 | Shock mount upper |
| 17 | 84449 | 1 | Switch, neutral interlock | 77 | 1524 | 2 | Welch plug |
| 18 | 84314 | 2 | Elbow, fuel line | 78 | * 1201 | 12 | Hex slot hd screw, 1/4 - 20 x 3/4 |
| 19 | 1481 | 4 | Hex slot hd screw, 1/4 - 20 x 9/16 | 79 | 1516 | 3 | Hex nut, 5/16 - 18 |
| 20 | 93811 | 2 | Screen, cylinder drain reed plate | 80 | * 1646 | 1 | Hex socket hd cap screw, 3/8 - 16 x 2 1/4 |
| 21 | * A307010-2 | 1 | Cylinder w/crankcase cover, deflector plate and screws | 81 | * 8559 | 2 | Dowel pin |
| 22 | 93748-1 | 1 | Cylinder drain reed plate gasket | 82 | 40867 | 1 | Exhaust water jacket cover gasket |
| 23 | A93757 | 1 | Cylinder drain reed plate w/reeds, reed stops, screws and screen | 83 | 40866 | 1 | Exhaust water jacket cover |
| 24 | 18160-1 | 2 | Reed, cylinder drain | 84 | 1088 | 12 | Fill hd screw, S.S., 10 - 24 x 9/16 |
| 25 | 93920 | 2 | Cylinder drain reed stop | 85 | 40154-2 | 2 | Exhaust port plate gasket |
| 26 | 8003 | 2 | Plain washer | 86 | 40151-1 | 1 | Exhaust port plate |
| 27 | 1286 | 2 | Pan hd screw, 4 - 40 x 3/16 | 87 | 97152-6 | 1 | Exhaust port cover |
| 28 | 93472-1 | 1 | Cylinder drain cover gasket | 88 | 901834 | 1 | Lead wire clip |
| 29 | 269471 | 1 | Cylinder drain cover | 89 | 1660 | 5 | Hex hd screw, 1/4 - 20 x 2 1/8 |
| 30 | 269052 | 2 | Shift arm bearing | 90 | 1223 | 4 | Hex slot hd screw, 1/4 - 20 x 1 1/8 |
| 31 | 1198 | 2 | Hex slot hd screw, 1/4 - 20 x 1 | 91 | 141275 | 1 | Fitting, thermostat |
| 32 | 7004 | 1 | Stop nut, 7/16 - 20 | 92 | 97772 | 2 | Clamp |
| 33 | 1083 | 2 | Fill hd screw w/lockwasher, 10 - 24 x 3/8 | 93 | A97247 | 1 | Water tube, thermostat |
| 34 | 2A338876 | 1 | Shift arm w/clamp and swivel | 94 | 97275 | 1 | Fitting, thermostat |
| 35 | 1136 | 2 | Flat hd screw, 1/4 - 20 x 1 | 95 | 1069 | 3 | Fill hd screw, 10 - 24 x 1 1/16 |
| 36 | 1111 | 1 | Fill hd screw, 1/4 - 20 x 7/8 | 96 | 307104 | 1 | Thermoswitch wire |
| 37 | 1490 | 1 | Hex nut, 1/4 - 20 | 97 | 8056 | 1 | Lockwasher |
| 38 | * 1879 | 3 | Hex socket hd cap screw, 3/8 - 16 x 1 5/8 | 98 | 1302 | 1 | Pan hd screw, 8 - 32 x 1/4 |
| 39 | 84026 | 2 | Spark control swivel | 99 | 328109 | 1 | Pipe plug |
| 40 | 307445 | 1 | Spark control link | 100 | 174227 | 2 | Spark plug (L-4-J) |
| 41 | 84036 | 1 | Spark control bearing, L.H. | 101 | 289449 | 1 | Thermoswitch |
| 42 | 1339 | 1 | Hex nut, 10 - 24 | 102 | 97066-1 | 1 | Thermostat cover |
| 43 | 84035-2 | 1 | Spark control bearing, R.H. | 103 | 97067 | 1 | Thermostat cover gasket |
| 44 | 269689 | 2 | Bearing, tower shaft | 104 | 97068-1 | 1 | Thermostat |
| 45 | 269665 | 2 | Tower shaft bearing cage | 105 | 97504 | 1 | Grommet, thermostat |
| 46 | 1084 | 4 | Fill hd screw, 10 - 24 x 5/8 | 106 | 8064 | 3 | Spring lockwasher |
| 47 | A269141-1 | 2 | Ball joint w/bearing | 107 | | 1 | Screw and nut, order K405020 |
| 48 | 1340 | 2 | Hex nut, 10 - 32 | 108 | K405020 | 1 | Replacement swivel |
| 49 | 1910 | 1 | Elastic stop nut, 1/4 - 20 | 109 | 85610 | 1 | Bearing |
| 50 | 269319 | 2 | Throttle cam bearing | | 269122 | 1 | Crankcase parting line seal (not shown) |
| 51 | 307192 | 1 | Throttle cam | | K-746 | 1 | Engine touch-up paint, spray bomb |
| 52 | 27209-1 | 1 | Stud, throttle cam | | | 1 | Olive Gold Enamel |
| 53 | 269193 | 1 | Throttle link | | K-737 | 1 | Engine touch-up paint, spray bomb |
| 54 | A307838 | 1 | Tower shaft w/clamp and swivel | | | 1 | Frost White Flat |
| 55 | 8065 | 2 | Lockwasher | | G-457 | 1 | Gasket set (not shown) |
| 56 | 1253 | 2 | Hex socket hd cap screw, 3/8 - 16 x 2 | | C307010-2 | 1 | Cylinder complete, includes all items marked with an asterisk (*). Also refer to crankshaft page. |
| 57 | 1770 | 2 | Stop nut, 8 - 32 | | | | |
| 58 | 307942-1 | 2 | Bumper | | | | |
| 59 | 1833 | 1 | Hex hd screw, 1/4 - 20 x 1 | | | | |
| 60 | 1101 | 2 | Fill hd screw w/lockwasher, 1/4 - 20 x 1 3/4 | | | | |

POWER HEAD



Crankshaft and Piston Group

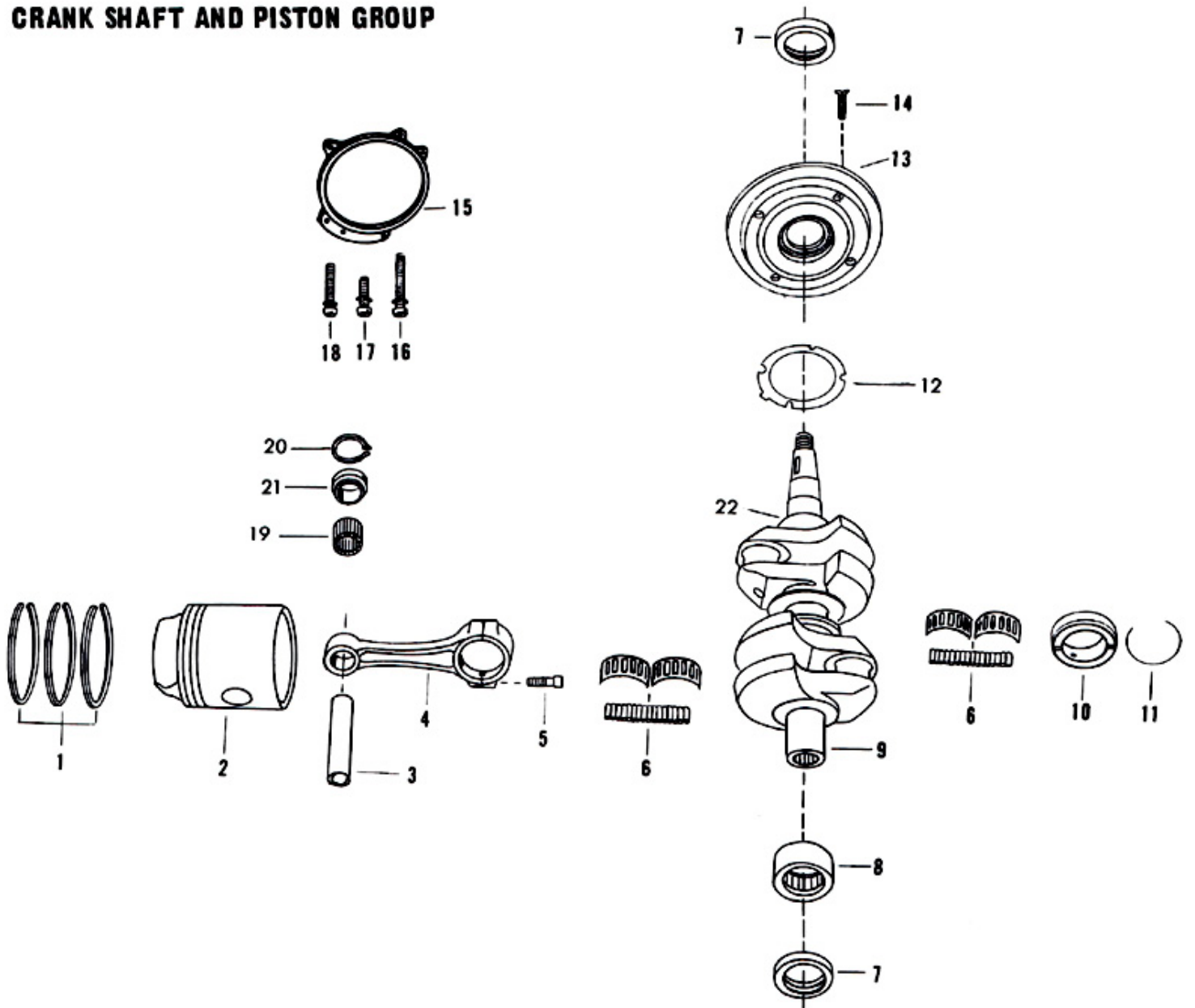
| ILLUS. NO. | PART NO. | QTY. | DESCRIPTION |
|------------|--------------|------|---|
| 1 | * A353260 | 1 | Piston ring set (6 per set) |
| 2 | * 377015 | 2 | Piston |
| 3 | * 40017-1 | 2 | Piston pin |
| 4 | * 2A366016-3 | 2 | Connecting rod w/cap and screws |
| 5 | * 85634 | 4 | Connecting rod screw |
| 6 | * A85228 | 3 | Bearing cage w/rollers (16 per set) |
| 7 | * 40146-1 | 2 | Crankshaft seal |
| 8 | * 90014 | 1 | Crankshaft lower main bearing |
| 9 | * A307018-2 | 1 | Crankshaft w/bearing |
| 10 | * A40655 | 1 | Crankshaft center main bearing w/snap ring |
| 11 | * 40410 | 1 | Snap ring |
| 12 | 366277 | 1 | Bearing cage gasket |
| 13 | 2A366144 | 1 | Crankshaft bearing cage w/seal and gasket |
| 14 | 1158 | 4 | Flat hd screw, 1/4 - 20 x 7/8 |
| 15 | 366082 | 1 | Magneto stator ring |
| 16 | 1812 | 2 | Fill hd screw w/lockwasher, 10 - 24 x 1 9/16 |
| 17 | 1080 | 1 | Fill hd screw w/lockwasher, 10 - 24 x 3/4 |
| 18 | 1813 | 1 | Fill hd screw w/lockwasher, 10 - 24 x 1 1/8 |
| 19 | 335217 | 2 | Piston pin bearing |
| 20 | 90096 | 4 | Piston pin retainer |
| 21 | 366215 | 4 | Spacer |
| 22 | | 1 | Crankshaft thrust bearing upper, not sold separately, contact factory for authorization to return crankshaft to factory for bearing replacement |

* Indicates Contents of Cylinder Complete. Also Refer to Power Head Page.

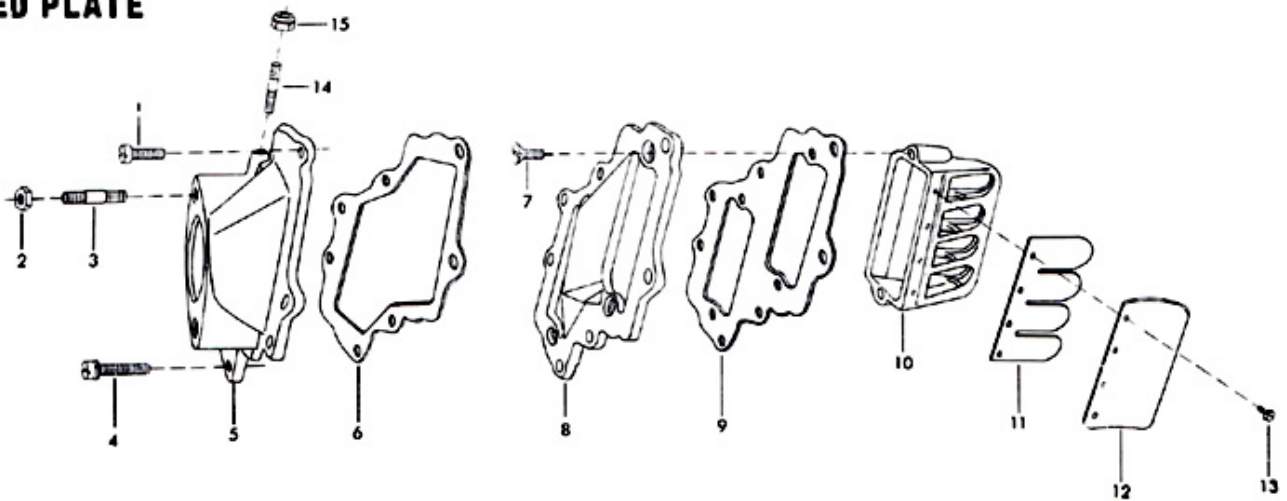
Reed Plate

| ILLUS. NO. | PART NO. | QTY. | DESCRIPTION |
|------------|----------|------|--|
| 1 | 1240 | 5 | Hex hd screw, 1/4 - 20 x 7/8 |
| 2 | 1516 | 2 | Hex nut, 5/16 - 18 |
| 3 | 40209 | 2 | Carburetor stud |
| 4 | 1580 | 2 | Fill hd screw w/lockwasher, 1/4 - 20 x 1 1/8 |
| 5 | 307167 | 1 | Carburetor adapter flange |
| 6 | 307168 | 1 | Carburetor adapter gasket |
| 7 | 1486 | 4 | Flat hd screw, 1/4 - 20 x 5/8 |
| 8 | 88404-1 | 1 | Deflector plate |
| 9 | 307406 | 1 | Deflector plate gasket |
| 10 | A88158-1 | 2 | Reed plate w/reeds, stops and screws |
| 11 | 88160 | 4 | Reed |
| 12 | 88161-2 | 4 | Reed stop |
| 13 | 1298 | 16 | Rd hd screw w/lockwasher, 6 - 32 x 1/4 |
| 14 | 27209-1 | 1 | Stud |
| 15 | 7008 | 1 | Stop nut, 1/4 - 20 |

CRANK SHAFT AND PISTON GROUP



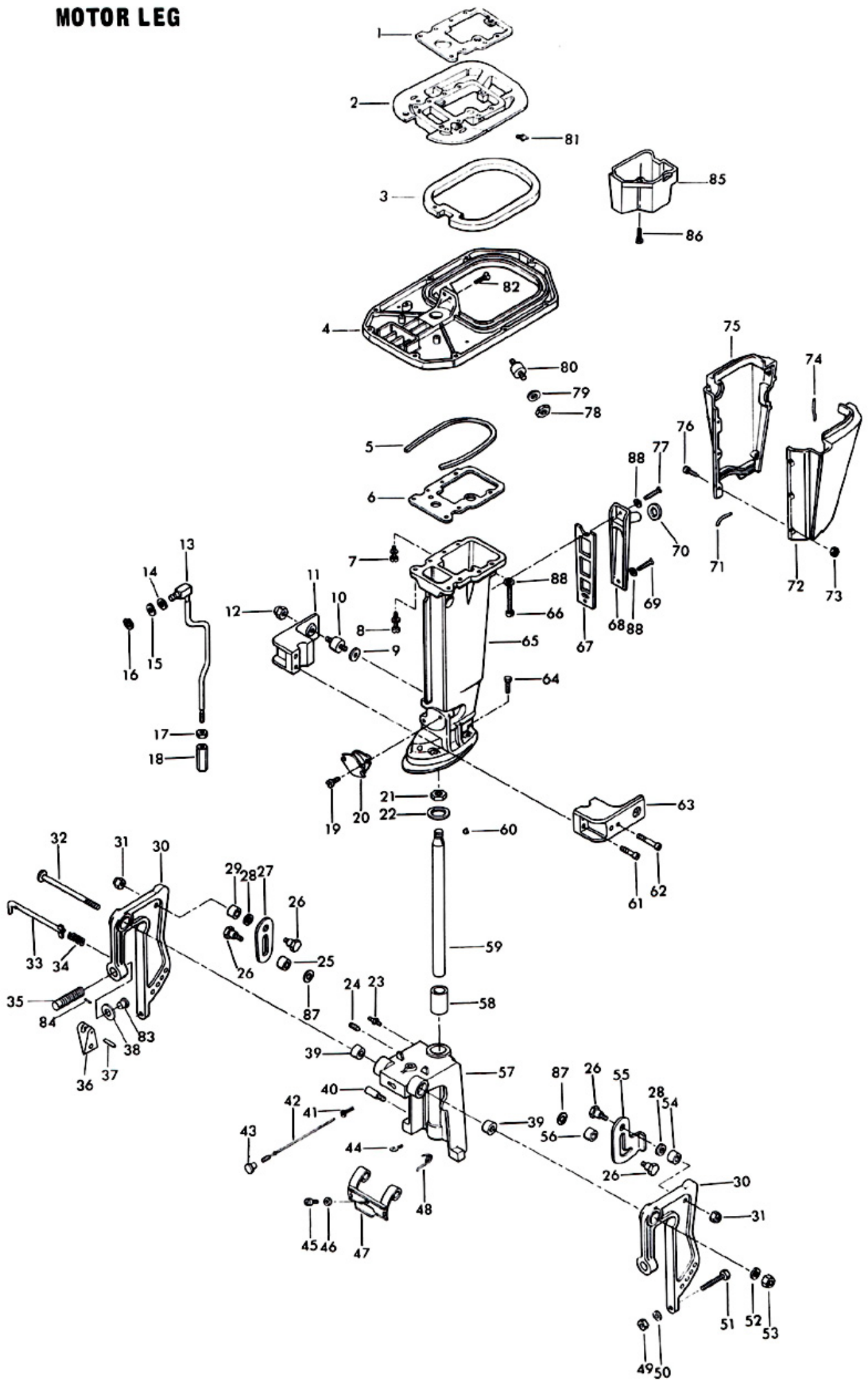
REED PLATE



Motor Leg

| ILLUS. NO. | PART NO. | QTY. | DESCRIPTION |
|------------|-----------|------|---|
| 1 | 307279-1 | 1 | Cylinder exhaust gasket upper |
| 2 | 307680-1 | 1 | Spacer plate |
| 3 | 307989 | 1 | Seal, king pin plate |
| 4 | 307940 | 1 | King pin plate |
| 5 | 307025 | 1 | Dampening pad |
| 6 | 307453-2 | 1 | Cylinder exhaust gasket lower |
| 7 | 1474 | 2 | Fill hd screw w/lockwasher, 5/16 - 18 x 1 3/4 |
| 8 | 1478 | 6 | Fill hd screw w/lockwasher. 5/16 - 18 x 2 |
| 9 | 137416 | 2 | Shock mount spacer |
| 10 | A215962 | 2 | Shock mount side lower w/spacer |
| 11 | 203972-1 | 1 | Shock mount lower cover, starboard |
| 12 | 1326 | 2 | Acorn nut, S.S., 5/16 - 18 |
| 13 | 307615 | 1 | Gear shift rod upper |
| 14 | 8035 | 1 | Plain washer |
| 15 | 8049 | 1 | Bowed spring washer |
| 16 | 185764 | 1 | Retainer ring |
| 17 | 1349 | 1 | Hex nut, S.S., 5/16 - 18 |
| 18 | 141704 | 1 | Gear shift rod coupling |
| 19 | 1129 | 4 | Fill hd screw, S.S., 5/16 - 18 x 1/2 |
| 20 | 183346 | 1 | Shock mount, lower |
| 21 | 84280 | 1 | King pin nut |
| 22 | 89011 | 1 | Swivel bracket washer |
| 23 | 213274 | 1 | Grease fitting |
| 24 | 1659 | 1 | Socket hd set screw, oval point, 1/4 - 28 x 1/4 |
| 25 | 269929 | 1 | Spacer, tilt stop |
| 26 | 269350 | 4 | Tilt stop pivot |
| 27 | 269433 | 1 | Tilt stop, starboard |
| 28 | 1666 | 2 | Bowed spring washer |
| 29 | 269929 | 1 | Spacer, tilt stop |
| 30 | A338532-1 | 2 | Stern bracket w/clamp screw |
| 31 | 1515 | 2 | Hex nut |
| 32 | 93037 | 1 | Stern bracket pivot bolt |
| 33 | A338113 | 1 | Stern bracket lock bar w/end and spring |
| 34 | 213380 | 1 | Spring, lock bar |
| 35 | A338073 | 2 | Clamp screw w/foot |
| 36 | 53075-1 | 2 | Clamp screw handle |
| 37 | 1638 | 2 | Spring pin |
| 38 | 24074 | 2 | Screw foot |
| 39 | 93928 | 2 | Stern bracket friction cone |
| 40 | 88350 | 2 | Reverse lock pin |
| 41 | 85884 | 1 | Detent, reverse lock release |
| 42 | A307586 | 1 | Reverse control release wire |
| 43 | 91507 | 1 | Knob |
| 44 | 307487 | 1 | Cable guide |
| 45 | 1556 | 1 | Fill hd screw, S.S., w/lockwasher, 10 - 24 x 3/8 |
| 46 | 8011 | 1 | Plain washer |
| 47 | A88263-1 | 1 | Reverse lock |
| 48 | 88300 | 2 | Reverse lock spring |
| 49 | 1346 | 2 | Hex nut, S.S., 3/8 - 16 |
| 50 | 1904 | 2 | Plain washer |
| 51 | 1593 | 2 | Hex hd screw, S.S., 3/8 - 16 x 3 |
| 52 | 1656 | 1 | Plain washer |
| 53 | 7001 | 1 | Elastic stop nut |
| 54 | 269929 | 1 | Spacer, tilt stop |
| 55 | 269426 | 1 | Tilt stop, port |
| 56 | 269929 | 1 | Spacer, tilt stop |
| 57 | A307072-2 | 1 | Swivel bracket w/bearings and grease fitting |
| 58 | 191169-1 | 2 | Swivel bracket bearing |
| 59 | A307019-1 | 1 | King pin w/welch plug |
| 60 | 9039 | 1 | Woodruff key # 7, S.S. |
| 61 | 1636 | 2 | Hex socket hd cap screw, S.S., 3/8 - 16 x 1 1/4 |
| 62 | 1635 | 2 | Hex socket hd cap screw, S.S., 3/8 - 16 x 3 1/2 |
| 63 | 203973-1 | 1 | Shock mount lower cover, port |
| 64 | 1477 | 4 | Hex hd cap screw, S.S., 3/8 - 16 x 1 9/16 |
| 65 | 307133-2 | 1 | Motor leg |
| 66 | 1905 | 1 | Fill hd screw, 1/4 - 20 x 3 9/16 |
| 67 | 40833-4 | 1 | Motor leg exhaust cover gasket |
| 68 | 89832-2 | 1 | Motor leg exhaust cover |
| 69 | 1199 | 1 | Hex hd screw, 1/4 - 20 x 1 |
| 70 | 89504 | 1 | Grommet motor leg exhaust cover |
| 71 | 89323 | 2 | Packing, leg cover lower |
| 72 | 89135-4 | 1 | Motor leg cover, port |
| 73 | 1473 | 6 | Hex nut, 10 - 24 |
| 74 | 89323 | 2 | Packing, leg cover upper |
| 75 | 89145-4 | 1 | Motor leg cover, starboard |
| 76 | 1088 | 6 | Fill hd screw, 10 - 24 x 9/16 |
| 77 | 1849 | 1 | Hex hd screw, S.S., 1/4 - 20 x 1 3/8 |
| 78 | 1346 | 2 | Hex nut, 3/8 - 16 |
| 79 | 8038 | 2 | Plain washer |
| 80 | 307962 | 2 | Shock mount |
| 81 | 2738314-1 | 1 | Drain fitting |
| 82 | 1160 | 2 | Flat hd screw, 1/4 - 28 x 5/8 |
| 83 | 66480 | 2 | Stud |
| 84 | 8557 | 2 | Spring pin |
| 85 | 307660-1 | 1 | Tube, leg exhaust |
| 86 | 1851 | 3 | Fill hd screw w/lockwasher, 10 - 24 x 1/2 |
| 87 | 8032 | 2 | Plain washer |
| 88 | 8083 | 3 | Spring lockwasher |

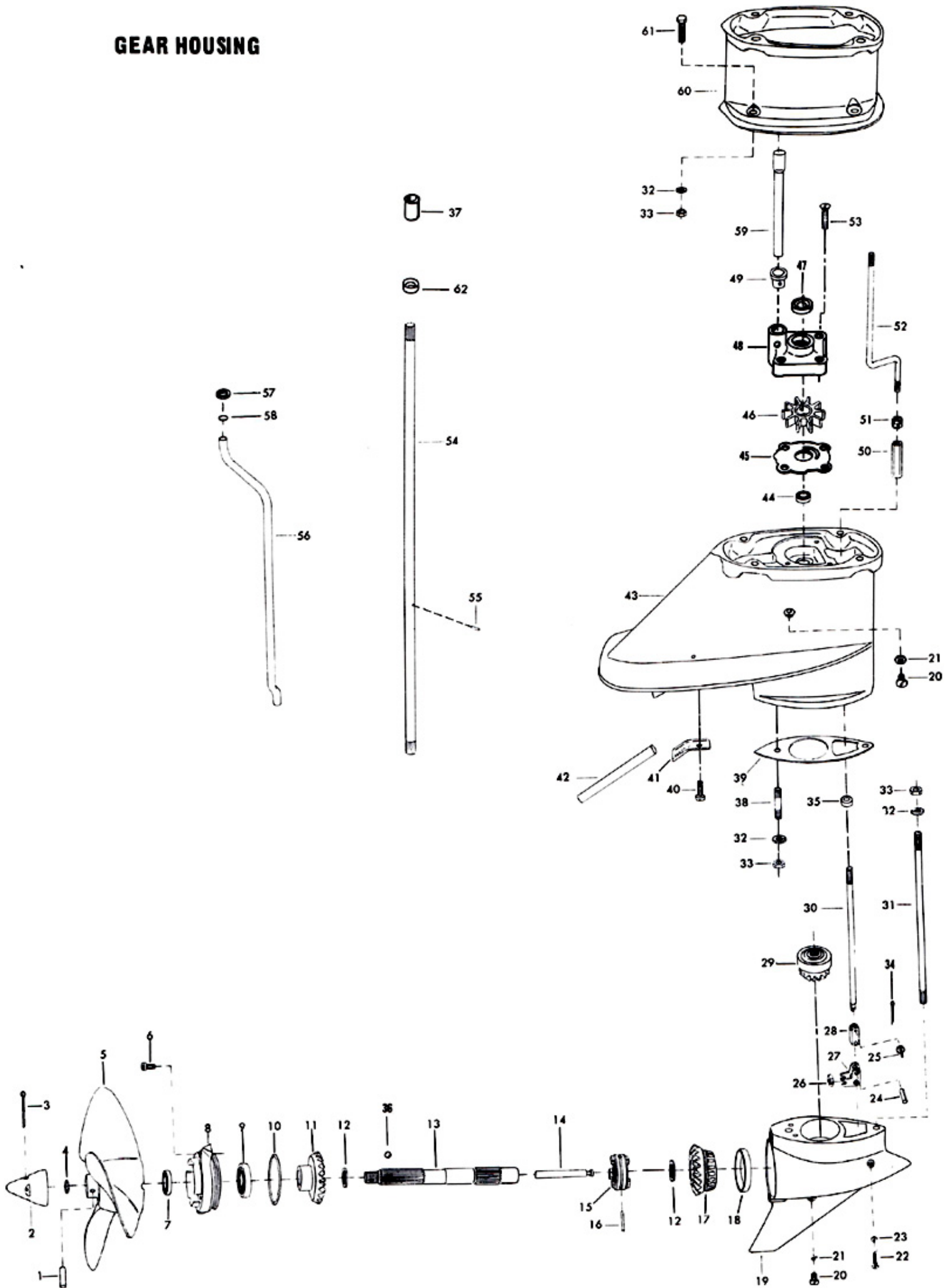
MOTOR LEG



Gear Housing

| ILLUS. NO. | PART NO. | QTY. | DESCRIPTION |
|------------|-------------|------|--|
| 1 | K-247 | 1 | Propeller pin, pack of 6 w/cotter pin |
| 2 | A94094-1 | 1 | Propeller nut, w/seal and cotter pin |
| 3 | 1027 | 1 | Cotter pin, S.S., 1/8 - 1 1/2 |
| 4 | 40342 | 1 | Seal, propeller nut |
| 5 | P293 | 1 | Propeller (Accessory Item) |
| 6 | * 1263 | 2 | Hex socket hd cap screw S.S., 5/16 - 18 x 9/16 |
| 7 | 141118 | 1 | Seal, propeller shaft |
| 8 | * A366298 | 1 | Propeller shaft bearing cage w/bearing and seal |
| 9 | * 366058 | 1 | Ball bearing, propeller shaft |
| 10 | * 141305 | 1 | Seal, propeller shaft bearing cage |
| 11 | * A99662 | 1 | Bevel gear rear w/bushing |
| 12 | * 40717 | 2 | Thrust washer, bevel gear |
| 13 | * A287098-2 | 1 | Propeller shaft |
| 14 | * A90871-2 | 1 | Gear shift pin w/yoke |
| 15 | * 99521 | 1 | Clutch |
| 16 | * 8568 | 1 | Spring pin |
| 17 | * 2A99023 | 1 | Bevel gear front w/bearing |
| 18 | * 40250 | 1 | Propeller shaft thrust bearing cup |
| 19 | * A141054-1 | 1 | Gear housing lower w/plug, washer, thrust bearing cup |
| 20 | * 50109 | 2 | Plug, gear housing |
| 21 | * 8077 | 2 | Washer, gear housing plug |
| 22 | * 90891 | 1 | Gear shift arm pin |
| 23 | * 8001 | 1 | Nyltite washer |
| 24 | * 8554 | 1 | Spring pin |
| 25 | * 90372-1 | 1 | Pin |
| 26 | * A90871-2 | 1 | Gear shift arm yoke w/pin |
| 27 | * A90621 | 1 | Gear shift arm w/bushing |
| 28 | * 90263-1 | 1 | Coupling, shift arm |
| 29 | * A46266 | 1 | Bevel pinion w/bearing |
| 30 | * 311705-1 | 1 | Gear shift rod lower |
| 31 | 97008-1 | 1 | Stud, long |
| 32 | 8065 | 6 | Lockwasher, S.S. |
| 33 | 1346 | 6 | Hex nut, S.S. 3/8 - 16 |
| 34 | 1015 | 1 | Cotter pin |
| 35 | 338618-1 | 1 | Seal, shift rod lower |
| 36 | 366727 | 1 | Ball, prop shaft |
| 37 | 338129 | 1 | Boot |
| 38 | 40008 | 1 | Stud, short |
| 39 | 40555 | 1 | Gasket, gear housing |
| 40 | 1055 | 1 | Fill hd screw, S.S., 1/4 - 20 x 1 |
| 41 | 40706-1 | 1 | Inlet water plate |
| 42 | 40773 | 1 | Inlet water tube |
| 43 | A338554-1 | 1 | Gear housing upper w/seal, washer, plug, inlet water tube |
| 44 | 40307-2 | 1 | Seal, driveshaft |
| 45 | 341562 | 1 | Water pump back plate |
| 46 | 40065-1 | 1 | Water pump impeller |
| 47 | 349307 | 1 | Water pump driveshaft seal |
| 48 | A341060 | 1 | Water pump body w/seal |
| 49 | 93914 | 1 | Seal, inlet water line lower |
| 50 | 331704 | 1 | Coupling, gear shift rod, lower |
| 51 | 331273 | 1 | Coupling |
| 52 | 97616 | 1 | Gear shift rod intermediate, for standard leg |
| | A312616 | 1 | Gear shift rod intermediate, for long leg |
| 53 | 1149 | 4 | Flat hd screw, S.S., 1/4 - 20 x 1 1/4 |
| 54 | A191128-1 | 1 | Driveshaft for standard leg |
| | A89128-1 | 1 | Driveshaft for long leg |
| 55 | 901563 | 1 | Water pump impeller drive pin |
| 56 | 141244 | 1 | Inlet water line |
| 57 | 40342 | 1 | Seal |
| 58 | 8042 | 1 | Plain washer |
| 59 | S40244-1 | 1 | Inlet water line extension |
| 60 | 93845-2 | 1 | Motor leg extension |
| 61 | 1477 | 4 | Hex bolt, S.S., 3/8 - 16 x 1 9/16 |
| 62 | 338271 | 1 | Retainer |
| | C287054-1 | 1 | Gear housing, lower, complete, includes all items marked with an asterisk (*) |

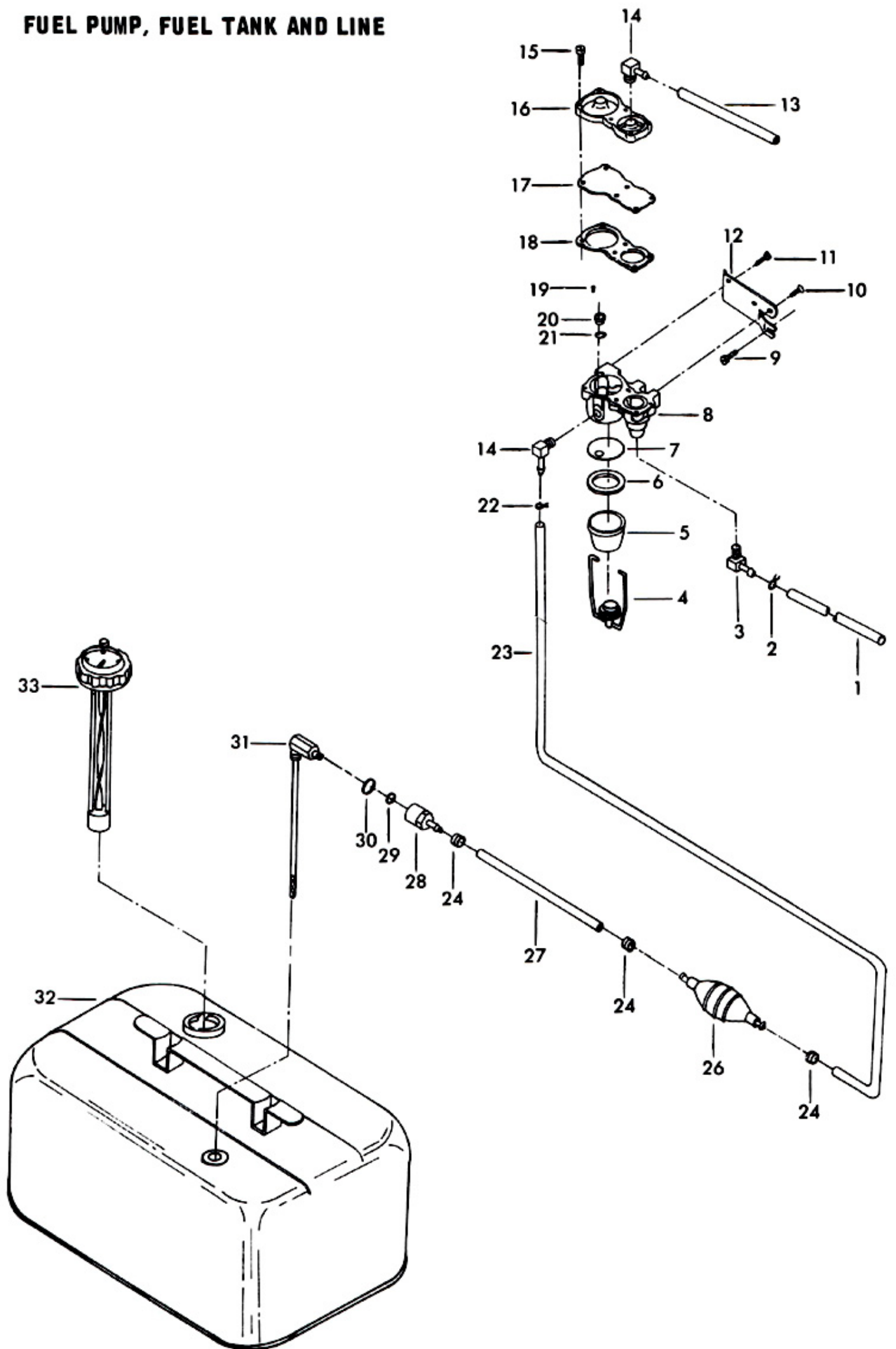
GEAR HOUSING



Fuel Pump, Fuel Tank and Line

| ILLUS. NO. | PART NO. | QTY. | DESCRIPTION |
|------------|-----------|------|-----------------------------------|
| 1 | A90753 | 1 | Fuel line, pump to carburetor |
| 2 | 2706772 | 2 | Fuel line clamp |
| 3 | 40314-1 | 1 | Elbow |
| 4 | A89650 | 1 | Fuel sediment bail and nut |
| 5 | 89500 | 1 | Fuel sediment bowl |
| 6 | 84617 | 1 | Fuel sediment bowl gasket |
| 7 | 84653 | 1 | Fuel sediment bowl screen |
| 8 | A366431 | 1 | Fuel pump body w/valves |
| 9 | 1578 | 1 | Hex slot hd screw, 1/4 - 20 x 7/8 |
| 10 | 1156 | 1 | Flat hd screw, 1/4 - 20 x 1/2 |
| 11 | 1241 | 2 | Hex hd screw, 1/4 - 20 x 9/16 |
| 12 | 201432 | 1 | Fuel pump mounting bracket |
| 13 | 89758 | 2 | Fuel pump air hose |
| 14 | 84314 | 3 | Elbow |
| 15 | 1050 | 6 | Fill hd screw, 10 - 24 x 1 |
| 16 | 84746 | 1 | Fuel pump cover |
| 17 | A84747 | 1 | Fuel pump diaphragm w/gasket |
| 18 | 84760 | 1 | Fuel pump gasket |
| 19 | 1860 | 2 | Rd hd screw, 6 - 32 x 1/4 |
| 20 | 177330 | 3 | Fuel pump valve |
| 21 | 84792 | 3 | Fuel pump valve gasket |
| 22 | 97772 | 1 | Fuel line clamp |
| 23 | A197752-1 | 1 | Fuel line long w/clamps |
| 24 | 298788 | 3 | Ferrule |
| 26 | S387766-1 | 1 | Fuel line prime bulb |
| 27 | A84754-1 | 1 | Fuel line w/clamps |
| 28 | 197787-2 | 1 | Fuel line coupler |
| 29 | 213735 | 1 | Seal, fuel line coupler (small) |
| 30 | 213342 | 1 | Seal, fuel line coupler (large) |
| 31 | 402755 | 1 | Fuel tank adapter |
| 32 | 60-9273M | 1 | Fuel tank (Accessory Item) |
| 33 | 213251 | 1 | Fuel tank gauge cap |
| | 224394-3 | 1 | Decal, fuel mixture (not shown) |

FUEL PUMP, FUEL TANK AND LINE



Specifications

HORSEPOWER -- 35 O.B.C. Certified Brake H.P. at 4750 R.P.M.

MOTOR -- Two-Cycle, Twin Cylinder Alternate Firing.

BORE AND STROKE -- 3" Bore x 2.540" Stroke.

DISPLACEMENT -- 35.9 Cubic Inches.

CONNECTING RODS -- Forged Nickel Steel, Caged Roller Bearings at Crankshaft. Cased Needle Bearings at Piston Pin.

CRANKSHAFT -- Forged Nickel Steel. Ball Bearings at Upper Main. Caged Roller Bearings at Center and Lower Mains.

CORROSION PROTECTION -- Alodine Treated Castings, Stainless Steel Drive Shaft, Propeller Shaft, Gear Shift Rod and Underwater Fasteners.

PROPELLER -- Aluminum Alloy, 10 - 3/8 Dia x 11-1/2 Pitch. Right Hand Rotation.

FUEL TANK -- Separate Steel Tank, 6 U.S. Gallons.

FUEL SYSTEM -- Vacuum-Type Fuel Pump, Float Feed Carburetor with Fixed High Speed Jet and Adjustable Low Speed Jet.

FUEL FILTERS -- Filter Screen in Fuel Tank and Fuel Pump.

COOLING -- Water Cooled, Positive Displacement Type Water Pump.

TRANSOM HEIGHT -- 15".

WEIGHT -- 130 Pounds For Standard Shaft Models.

PROPELLER SHAFT AND DRIVE SHAFT -- Stainless Steel, Hardened, Ground and Polished.

TILT LOCK -- Positive Tilt Lock Permits Engine to Remain in Tilted Position When Not in Use.

RECOMMENDED OPERATING RANGE -- 4400-5100 RPM

Lubrication Chart

UPPER AND LOWER GEAR HOUSINGS -- Check After Every Thirty Hours of Operation and Replace After Every 100 Hours with a Non-Corrosive Leaded Outboard Gear Oil - Texaco Outboard Gear Oil - EP90 or Equivalent. Do Not Use Corrosive Hypoid Oil Under Any Circumstances.

CONTROL LINKAGE -- Lubricate All Moving Parts and Control Linkage with Rykon #2EP, Part No. K-65, Twice Each Season or Oftener if Required.

STERN BRACKET -- Lubricate Stern Bracket and Associated Parts With Rykon #2EP, Part No. K-65, Twice Each Season or Oftener if Required.

GREASE FITTINGS -- Grease Fittings Are Provided at Critical Points Where Bearing Surfaces Are Not Exposed Externally. Using an Automotive-type Grease Gun and Lubricant, Grease Twice Each Season or Oftener if Required.

STARTER PINION GEAR -- Lubricate With Rykon #2EP, Part No. T-2961, Twice Each Season or Oftener if Required.

Special Adjustments

BREAKER POINT GAP -- .20".

SPARK PLUG -- Champion L-4-J, Gap .030".

FLYWHEEL NUT -- Torque to 75 Foot Pounds.

CYLINDER HEAD BOLT -- Torque to 270 Inch Pounds.

POINT OF THROTTLE OPENING --

1. Unsnap Ball Joint Connector From Throttle Tower Shaft
2. With Throttle Shutter in Carburetor Closed, Adjust Eccentric Screw Holding Throttle Roller to Throttle Shaft so that Pick-up Line on Lower End of Throttle Cam is Exactly Centered on Throttle Roller.
3. Advance Throttle Tower Shaft and Throttle Cam to Full Advance Position. (Throttle Shutter Horizontal)
4. Adjust Ball Joint Connectors Until spacing is identical to Spacing Between Connector Stud on Throttle Cam and Throttle Tower Shaft.
5. Snap Connector in Place on Throttle Tower Shaft.